



**DON BOSCO NATIONAL FORUM
FOR THE YOUNG AT RISK**

DON BOSCO NATIONAL FORUM FOR THE YOUNG AT RISK

Don Bosco National Forum for the Young at Risk (DB YaR Forum) was established in 2001 and registered as a Trust in 2002. Its mission is to reflect, share and coordinate services for South Asia's at-risk children and young people. The DB YaR Forum aims to collaborate with civil society, government and non-governmental organizations to influence relevant policies at the state, national and international levels.

We have initiated a data-driven management and intervention planning supported by the latest technologies and practices. Homelink Network is an ongoing initiative to respond effectively to changing needs based on accurate documentation and data analysis. Homelink DIGI will assist in timely and factual monitoring and intervention planning for children and young people at risk. Over the years, Homelink Network has grown with 60 partners.



HOMELINK NETWORK

Homelink Network is an ongoing initiative started by DB YaR Forum in 2002, to ensure appropriate, timely and real-time response to the needs of the young at risk, based on accurate documentation and data analysis supported by the best of technologies available today.

HOMELINK NETWORK AIMS TOWARDS

- a. Developing a data driven childcare system through documentation, research, and networking
- b. Systematically documenting the systems, processes, and workflow of the organizations
- c. Data led intervention planning in organizations
- d. Data-driven advocacy and engagement with stakeholders and government on children's issues
- e. Harnessing current advances in digital technologies in the service of the work with young at risk

1998

SCRAP

Street Children
Rehabilitation And
Protection -
Database System

2000

THIRD EYE

A website for
Child Care

2002

TALAASH

An initiative of
Balprafulta

2004

**HOMELINK &
MISSING CHILD
SEARCH**

A standard
Documentation
Tool

2007

**HOMELINK CHILD
MIS**

An enhanced model
and UNICEF Project
(Child Management
Information System)

EVOLUTION OF HOMELINK NETWORK

A Journey of Service: Empowering Young at Risk, Reuniting Missing Children, and Advancing Digital Tools for Data-Driven Decisions

2025

**HOMELINK DIGI
IMPLEMENTATION**

Needs
Assessment &
Implementation

2024

**HOMELINK DIGI
LAUNCHED**

Testing &
Development

2021

**CHILD MISS
UPGRADATION**

Assessment &
Development

2013

**CHILD MISS
IMPLEMENTED**

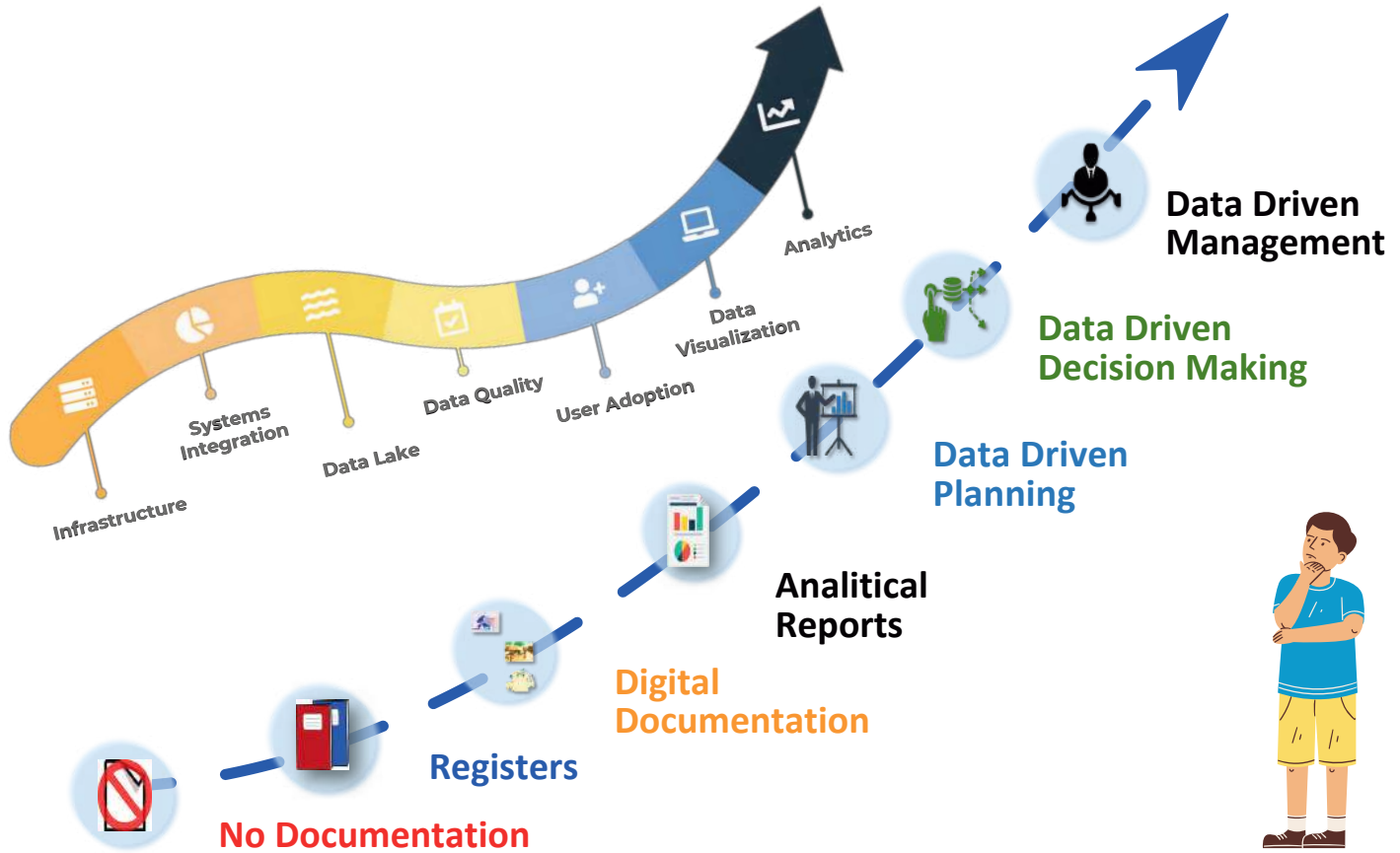
Child MISS
Launched &
Implemented

2009

**CHILD MISS
ASSESSMENT**

Requirement Study
& Development
(Child Management
Information System
& Services)

Data Driven Culture



HOMELINK DIGI

(Data Intelligence for Global Interface)

Homelink DIGI is a digital platform that streamlines micro-studies, data-driven decision-making and research; promotes network for proficiency publication and enhances services with these features:

- **Customizable Tool**
- **Facial Recognition**
- **Instant Reporting**
- **Mobile Application**
- **Web Application**



BENEFITS OF HOMELINK DIGI



Comprehensive Documentation



Paperless and Eco-Friendly



Data Analysis and Research



Quick and Easy Access



Data Privacy and Security



Single and Multiple Users Credentials



Digital Tracking



Unlimited Storage



Increased Productivity in Short Time



Real-Time Data Synchronization

COMPONENTS OF HOMELINK DIGI



Admin Panel / Resource Directory



Individual Profile



Call & Rescue - Street Presence



Missing Children: Track & Trace



Community Empowerment



Projects / Programs / Schemes



Events Management



Services & Follow-Up



Foster Care / Kinship Care



Sponsorship



Follow-Up



Staff / Volunteers

SERVICES

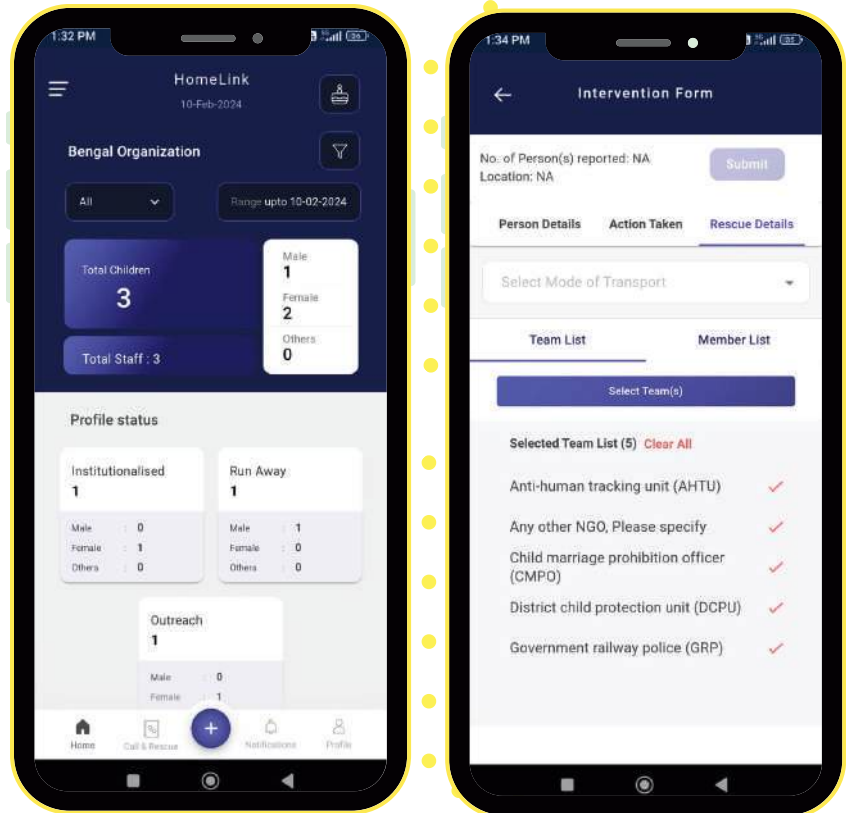
- Achievement
- Advocacy
- Camps
- Counselling
- Club Interventions
- CWC / JJB Details
- De-Addiction
- Education
- Growth Monitoring
- HIV/AIDS
- Home Enquiry
- Home Visit
- Hostel / Boarding
- Immunization Records



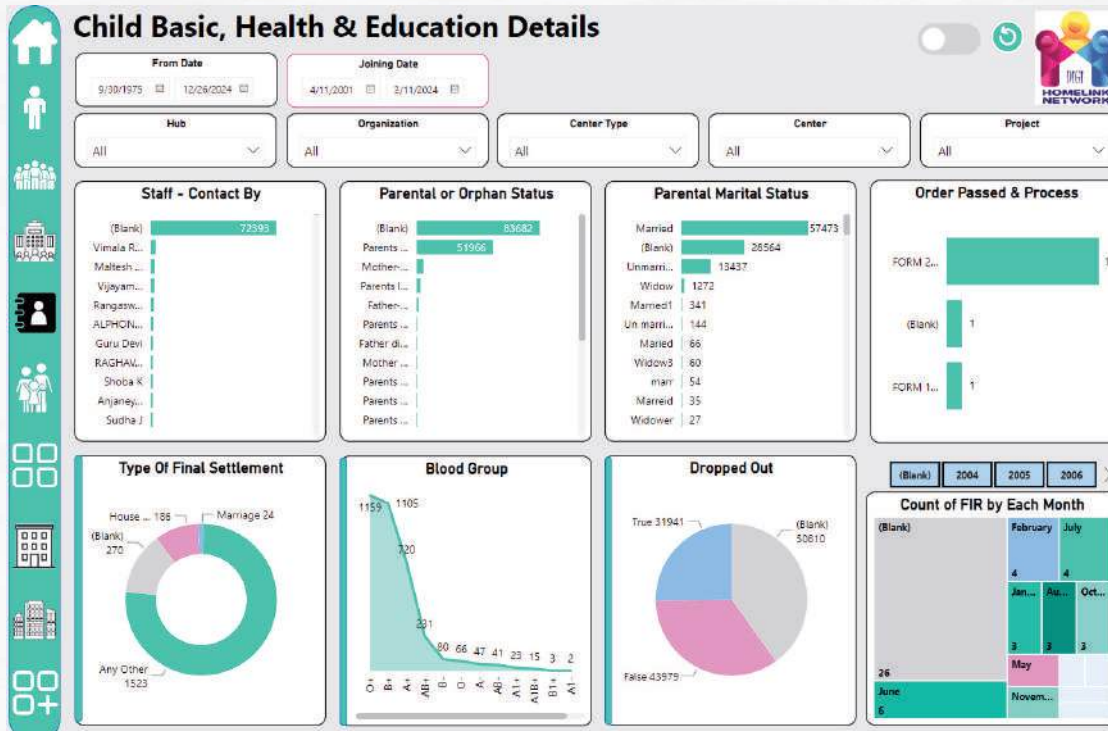
- Individual Care Plan
- Job Placement
- Medical
- Menstrual Cycle
- Parent Visit
- Post Restoration
- Provision Distribution
- Room Placements
- Savings
- Scouts & Guides
- Social Investigation Report
- Special Services
- Sports Records
- Vocational Training

MOBILE APP

The mobile application comes with a data entry feature and assists in monitoring and live reporting, making it easily accessible and instantly available for data accountability.



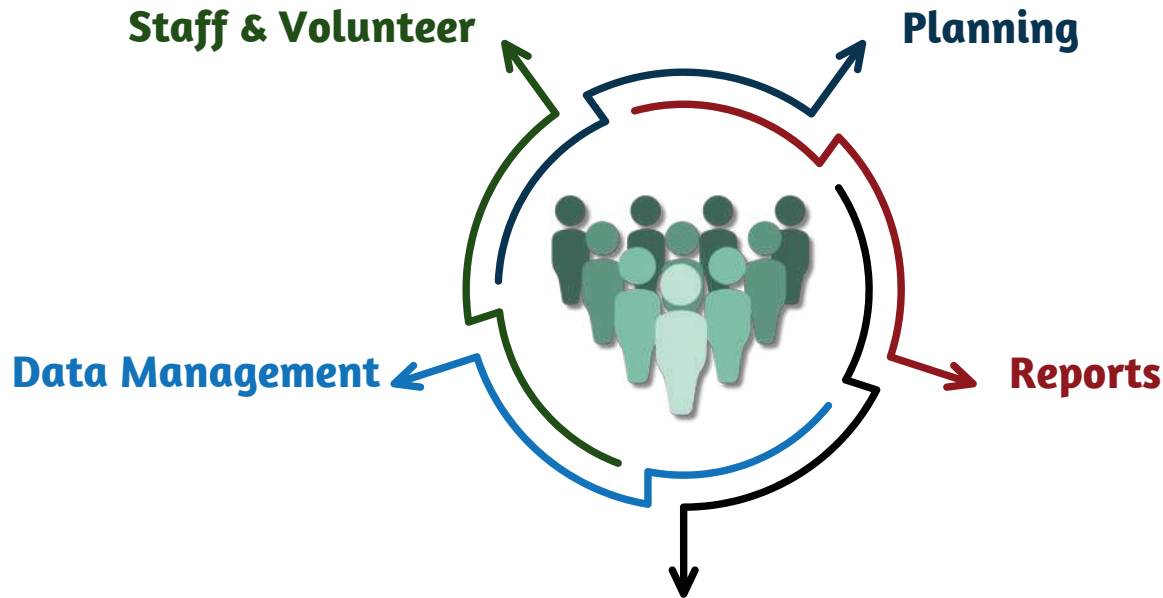
POWER BI



A Power BI report is a multi-perspective pictorial report that presents various information and findings through charts and graphs. It offers clear visual insights that aid in understanding data, ensuring the effectiveness of service execution with comprehensive strategic planning.

MANAGEMENT SYSTEM

INTEGRATED ORGANIZATIONAL MANAGEMENT SYSTEM: ENHANCING
COORDINATION AND WORKING EFFICIENCY



Monitoring & Coordination among Various Units / Departments

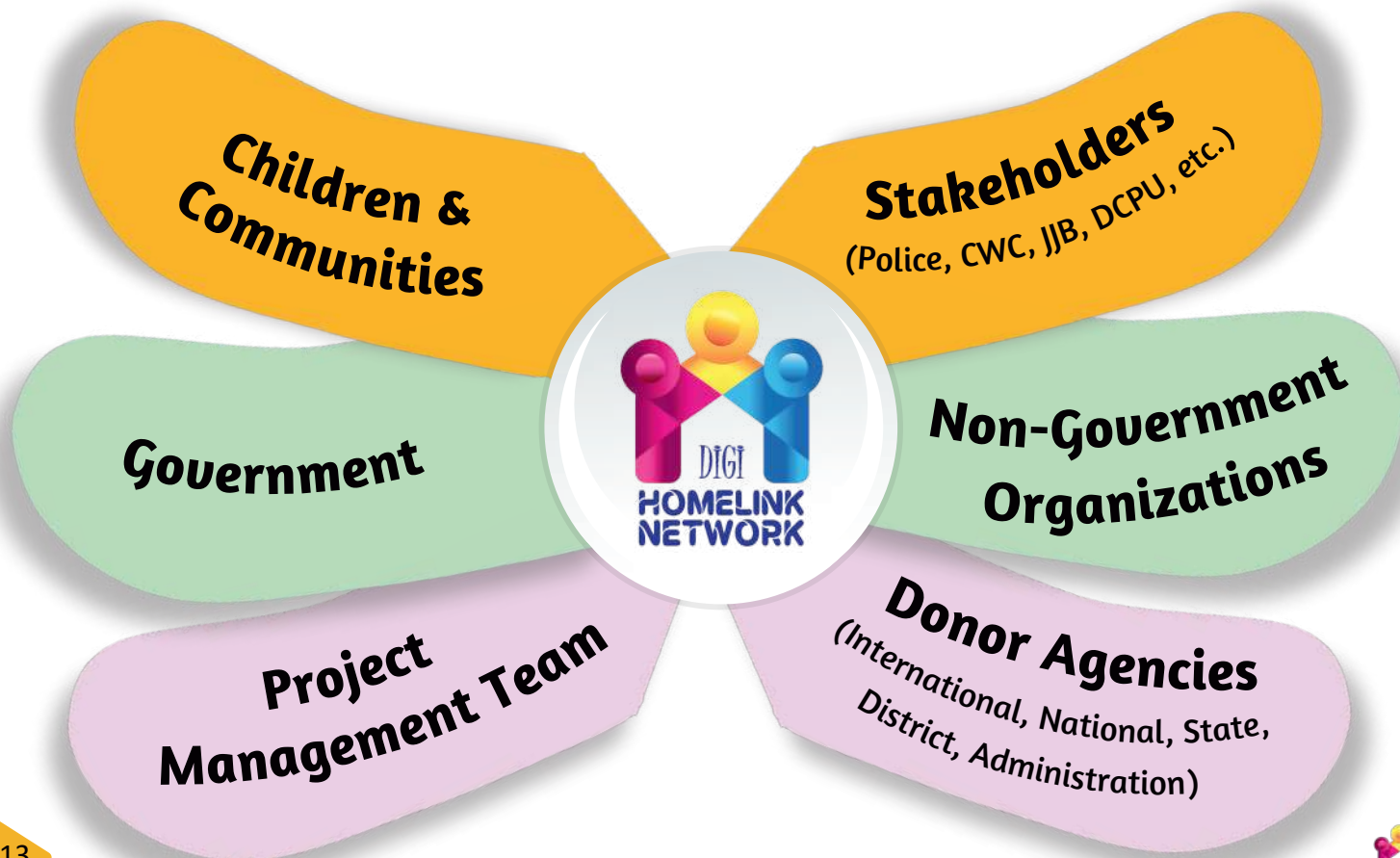
INSTITUTIONS WHO CAN USE

- After-care
- Children Home
- Counselling Center
- Day Care / Study Center
- De-Addiction Center
- Differently Abled
- Fit Facility
- HIV/AIDS Affected
- HIV/AIDS Infected
- Home for the Aged
- Hostel



- Leprosy Centre
- Life Skills
- Migrants' Center
- Observation Home
- Open Shelter
- Place of Safety
- Reception Unit
- Special Home
- Social Development
- Shakti Sadan (Women in Distress)
- VTC / ITI

WHO CAN BENEFIT?





“FOR THE CHILD WITHOUT PARENTAL CARE AND LINKING THE MISSING CHILD BACK HOME. HOME IS THERE WHERE YOU LET GO EVERYTHING AND YOU ARE SAFE, WHERE YOU CAN JUST BE YOURSELF, AND YOU AWAKEN TO YOUR POSSIBILITIES”.



For every at-risk young person, life in all its fullness...



NATIONAL CONTACT



Don Bosco House SPCI,
C – 991, Sector 7 Dwarka, New Delhi – 110077
+91 - 8851653538, 9968631479



www.dbyarforum.org, www.yarhomelink.com



info@dbyarforum.org, director@homelink.in



Brochure Download